

# Composite joists and decking installation guide

## Before beginning work

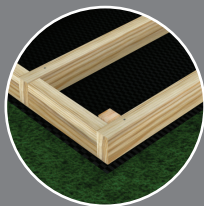
Having taken delivery of your boards, we recommend you allow them a day to adjust to your local temperature and conditions before starting work. We do not recommend installing your deck in very cold or very hot weather. Your composite decking boards can be worked with normal woodworking tools. We recommend using a wood saw with a fine-tooth blade to cut boards to size. When cutting, care should be taken to ensure the boards are properly supported.

### For your safety

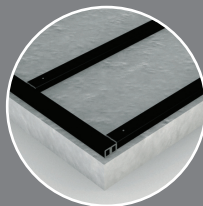
As with other building work it is important to work safely and to take suitable safety precautions including the wearing of protective clothes, gloves, safety goggles and dust mask. Visit the Health and Safety Executive's website [www.hse.gov.uk](http://www.hse.gov.uk) for more information on how to work safely.



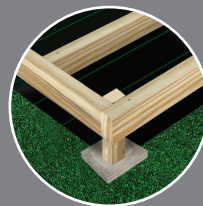
## What joists for what surface?



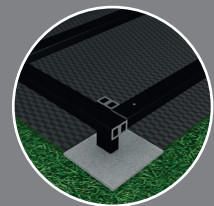
Grass  
Wood Joists



Concrete (10cm max)  
Composite Joists



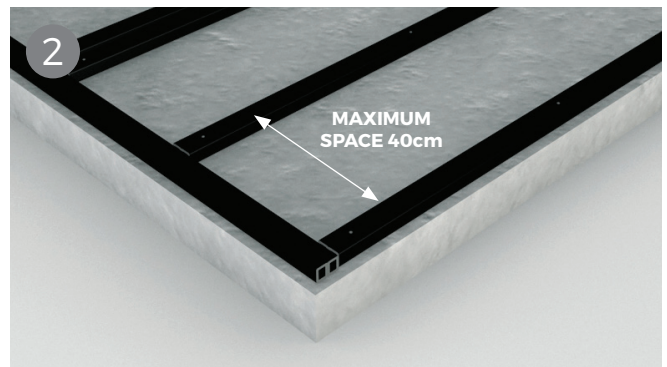
Raised Decking  
Wood Joists



Raised Decking  
Structural Joists



Make sure that the area to be decked is flat and stable. The concrete base should be at least **10cm thick** and have a slight slope - we suggest **a gradient of 1 in 80** - that runs away from the property to allow for the run-off of water that collects under the deck.



The maximum recommended space between joist rows depends on the angle at which you intend to lay your boards in relation to the joists, but should **never exceed 40cm**, please see diagram (above). Composite Joists should be screwed into the concrete base.



Order online at [www.cladcodecking.co.uk](http://www.cladcodecking.co.uk)  
Call us on 01837 659901

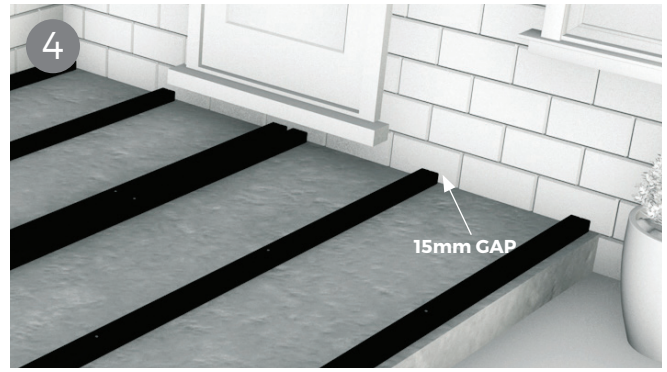
Please always consult a professional before installing Cladco Products

**CLADCO**  
DECKING





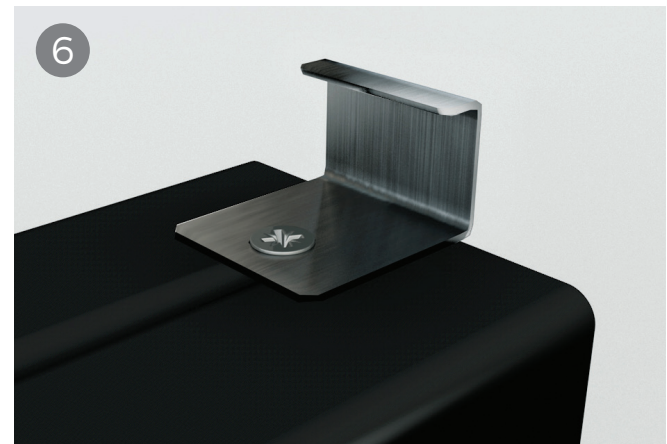
Boards must not be laid directly on the ground but should be fixed to the joists of a suitable supporting substructure. This will vary, for a domestic patio deck we typically recommend a simple concrete base and our own composite joists.



**A gap of at least 15mm** should be left between the ends of joists and a fixed object such as a wall and of **at least 8mm** between the ends of joists at butt joints. These allow for proper drainage and temperature expansion.



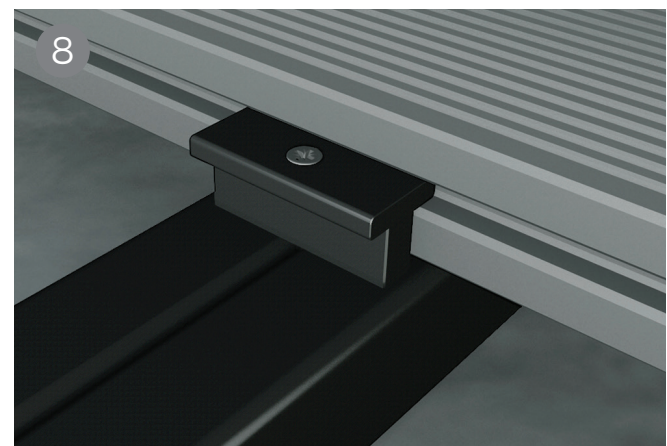
A starter clip needs to be fixed to the end of the composite joists before laying the first board. Place these at the end of each joist where you will start to lay your boards, leaving a gap of 15mm between the wall and the end of the joist to allow for expansion.



Starter clips allow you to start and finish your decking precisely where you want, meaning you won't have a large gap when fitting against a wall or fence. Attach the stainless steel starter clip to the end of the composite joist before starting to lay your composite decking boards.



Our composite boards are easily fastened to the joists of a supporting substructure with the help of our stainless steel screw and plastic T-Clip system. Start at the outside of the area to be decked. Place your first board and fix it to each joist it crosses using a row of starter clips.



Then fit T-clips into the groove along the side of the board and screw them into the supporting joists with the screws provided, one T-Clip for each supporting joist. We recommend you use our stainless steel wood screws offering increased wear and less corrosion.

**T clips will leave a 7mm gap between boards.**

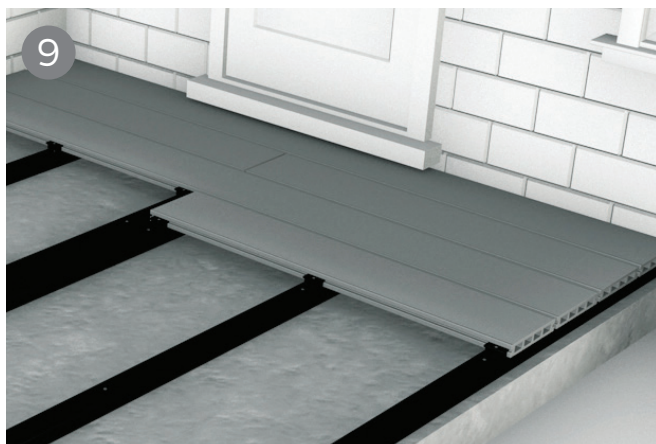


Order online at [www.cladcodecking.co.uk](http://www.cladcodecking.co.uk)  
Call us on 01837 659901

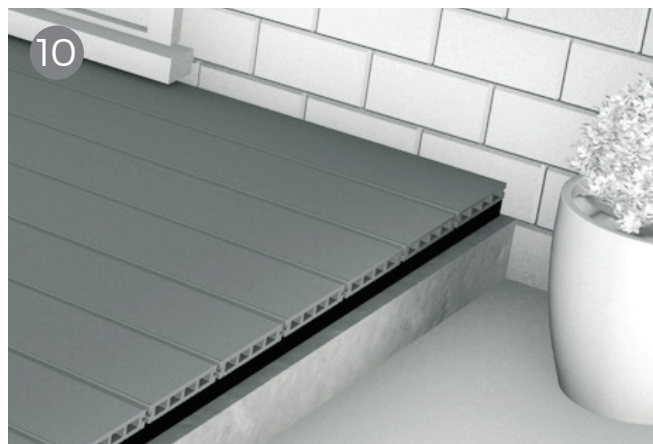
Please always consult a professional before installing Cladco Products

**CLADCO**  
DECKING

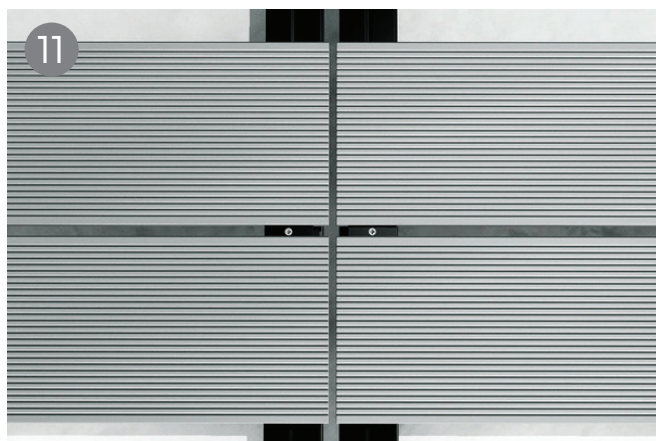




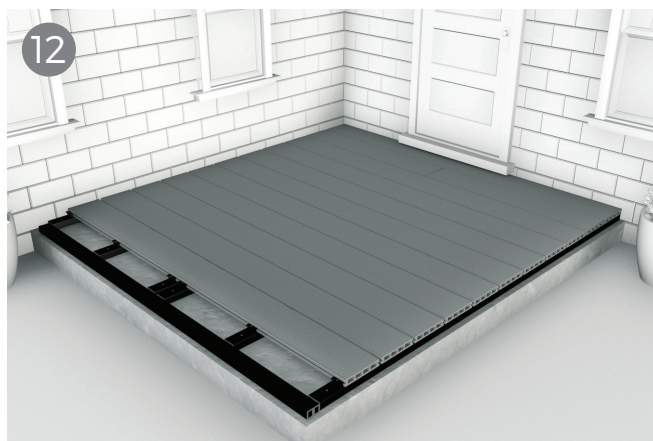
Fit your next board by sliding it onto the T-Clips used to secure the first board and fitting another set of T-Clips to secure the opposite side of the board, again one T-Clip for each supporting joist. Follow a similar process to fix subsequent boards.



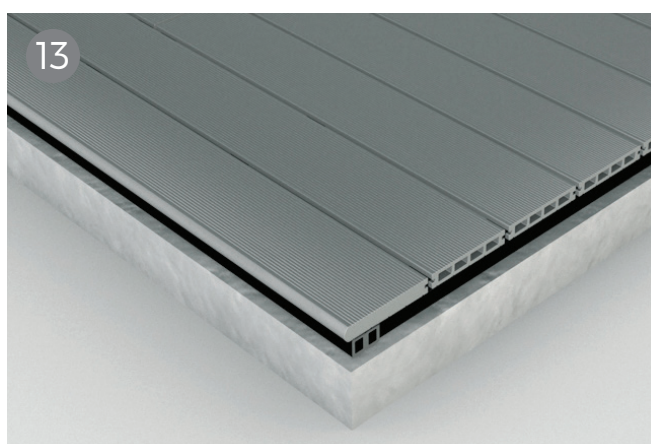
The ends of boards must be fully supported. No overhang or cantilever is advised.



At butt joints – where the ends of two decking boards meet, this may mean doubling up on supporting joists as you will need to ensure that each board is held in place with it's own T-Clip where they meet.



Having fastened your boards all that remains is to tidy up the sides of your new deck with our composite skirting or fascia boards which can be used to hide the unfinished end of boards and supporting joists.



Our hollow decking end caps are used to seal off the ends of hollow core boards to give your decking a professional finished look, end caps are available in the same colours as all our composite decking boards. Apply them to neatly complete your decking project.



Order online at [www.cladcodecking.co.uk](http://www.cladcodecking.co.uk)  
Call us on 01837 659901

Please always consult a professional before installing Cladco Products

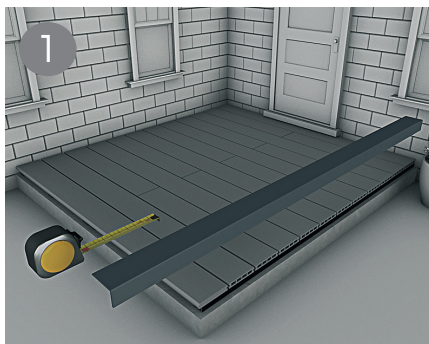
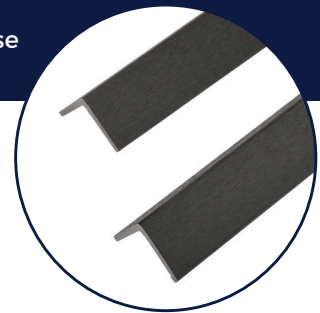
**CLADCO**  
DECKING

# How to finish your Decking Installation guide

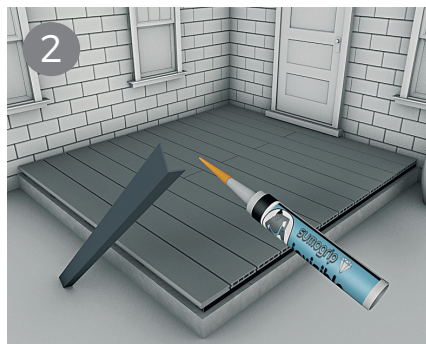
When creating your decking project there are lots of options for creating a high end finish from corner trims and bullnose boards for the edging and steps, to fascia boards for raised areas. This simple guide will show you how to install those options.

## CORNER TRIMS

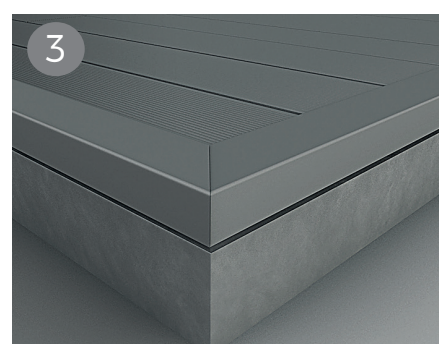
Corner trims are an L shape angle piece which can be used on the edges of your composite decking area. You can use a matching colour to compliment the rest of your project or even if you wanted a contrasting look, with each composite corner trim available in all 8 colours as the decking.



1 Take the corner trim and measure the length of the area its going to be fitted on to. Corner trims can be cut and worked just like timber so can be cut to desired size. If placing two trims side by side, simply butt up together.



2 Once the corner trim is cut to size, you can use sumogrip adhesive along one or both sides of the corner trim and attach to the edge of the decking. To allow for expansion you may wish to only glue the top edge to allow for some movement.

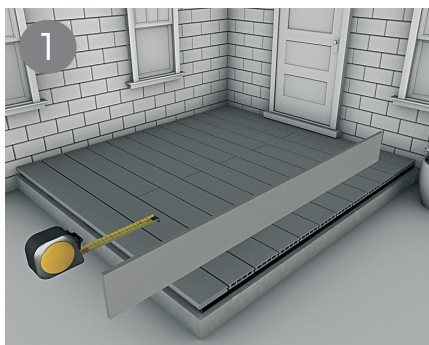


3 Once installed, you can then cut and place the second piece of trim along the edge until you have the desired finished look.

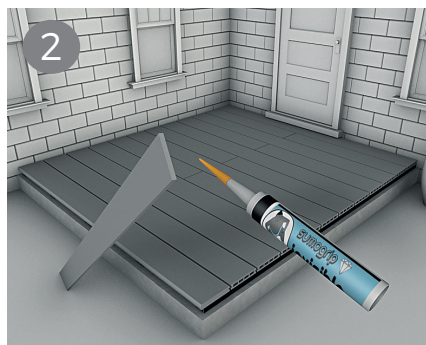


## SKIRTING TRIM

Each skirting trim, just like our composite decking and cladding boards, can be cut to size and sanded to fit. Skirting trim can be used as a fascia to your decking project depending on the depth required. Skirting trim is available in 8 colours to match the decking.



1 Measure the edge of the decking area to obtain the length required, skirting trim can be cut to size as needed. If you need a longer length than 2.2m simply butt the two skirting edges up together.



2 To fit the skirting trim you can either glue this using sumo grip adhesive or the trims can be screwed into the joists (Please note this method may cause the natural fibres to split) We advise the sumo grip adhesive option.



3 Once installed, you can then cut and place the second piece of trim along the edge until you have the desired finished look.



Order online at [www.cladcodecking.co.uk](http://www.cladcodecking.co.uk)  
Call us on 01837 659901

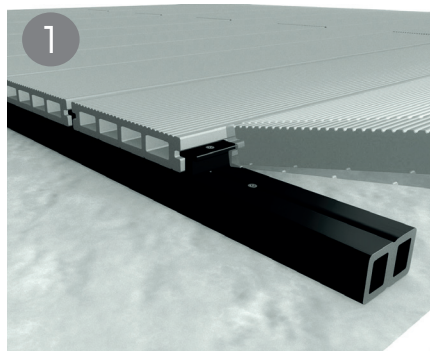
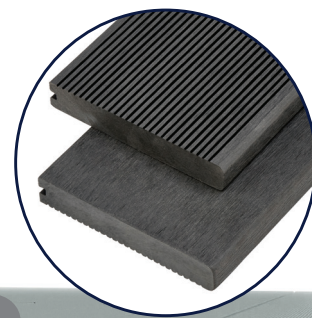
Please always consult a professional before installing Cladco Products

**CLADCO**  
DECKING

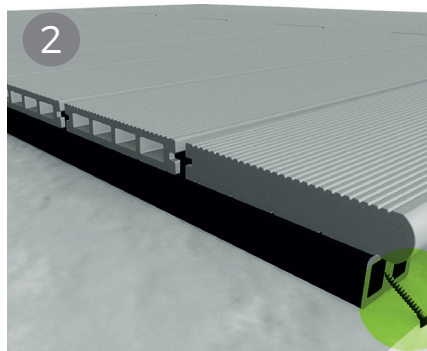


## BULLNOSE BOARDS

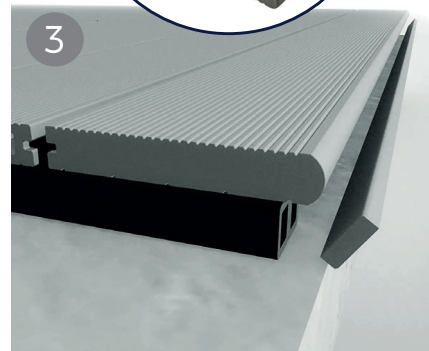
These decking boards are designed to give your decking project a professional finish to its borders. The rounded bullnose design creates a neat edge that can be used with all our composite decking profiles. Bullnose boards can be used into a picture frame effect as a different colour to the main deck, or in a complementary shade to blend in. They are also particularly good for steps.



1 After the last board of the main project has been laid, screw in a T clip along the edge of the final board. The bullnose board can then be inserted next to it.



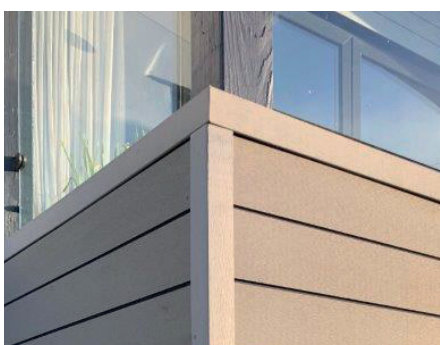
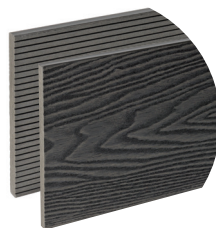
2 Once the bullnose board is placed you will need to insert a screw at an angle through the supporting joist underneath the board. Ensure the bullnose board is supported along the length with joists and a screw is inserted into each one.



3 Once the bullnose board has been secured into place you can use a skirting board to neaten the edge. For higher areas you may wish to use a decking board as an edge. Secure the skirting edge with either a screw into each joist or using sumo grip adhesive.

## FASCIA BOARDS

If creating a raised decking area you may wish to use a fascia board along the front edge, this can cover the support system used underneath the decking area. Depending on the height of your decking fascia boards can be used as a single board or installed on top of one another to create a solid side of fascia. Fascia Boards can be used with the woodgrain effect or narrow groove side pattern depending on your preference.

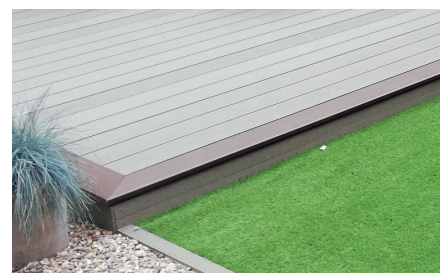


Cladco Composite Fascia Boards can be installed using both Sumo Grip Adhesive and 50mm Speeddekz Screws. When installing alternate between Sumo Grip and Screws every 150mm until the Board is firmly in place. The supporting structure underneath the decking must have adequate supports for the fascia board to be secured into. Sumogrip alone will not support the weight of the board and must be used in conjunction with screws.

Fascia Boards can be installed multiple boards high providing they are supported behind with a joist. Fascia boards can be secured into timber or composite supporting frames.

## END CAPS

Can be a tight fit, due to the natural fibres you may need to slightly sand them before placing on the ends of the boards. Ensure the end caps are not forced into place as this may cause them to snap.



## SKIRTING TRIM

Skirting Trims can be used in areas where the front fascia is much smaller, as the skirting boards are much thinner. Sumogrip adhesive can be used to secure Skirting Trims to joists.



Order online at [www.cladcodecking.co.uk](http://www.cladcodecking.co.uk)  
Call us on 01837 659901

Please always consult a professional before installing Cladco Products

**CLADCO**  
DECKING